

MACHINE VISES

This vise is ideal for use on CNC machines. This version of the Tight-Lock vise offers many sought-after features including the "lock down" principle which guarantees that the moveable jaw stays securely down and in place while machining.

In addition, the coolant through feature enables you to anchor a series of these vises snugly side-by-side on the machine bed. A number of similar parts can then be

clamped and machined at the same time, with minimum center-to-center distance. This provides greater production rates and reduces production costs.

Both sides of this vise are precision ground perpendicular and square to the bottom as well as parallel to each other respectively. Given this accuracy, the vise can also be rotated and used at 90° vertical position to the machine tool bed.

A	B	C	a	b	c	d	e	f	N.W. kg	PREMIUM		VALUE	
										Code 300-		Code 300-	
102	40	120	332	105	108	68	100	372	20	400		410	
152	44	146	370	154	117	73	111	438	30	401		411	

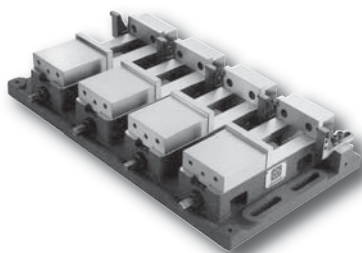
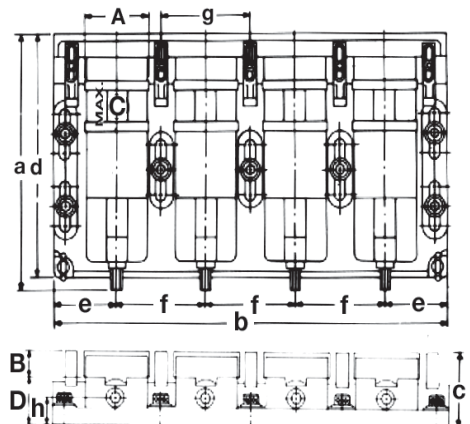
GANG VISES

FEATURES

- Accurate multi-positioning permits batch work
- Increases production rates and reduces costs
- Vise design completely eliminates movement and jaw tilt
- Guaranteed accuracy

The Tight-Lock principle is simple but effective. It is very popular due to its ability to keep the jaws free of movement or tilt while clamping and during machining operations. An amazingly simplistic design with impressive effectiveness!

ACCURACY: Achieving a new standard of accuracy; Squareness and parallelism within 0.02 mm



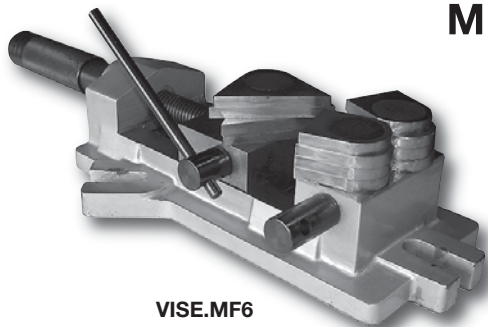
300-403

A	B	C	D	a	b	c	d	e	f	g	h	N.W. kg	Code 300-	
100	40	125	72	390	510	112	370	105	150	150	40	72	402	
100	40	125	72	390	660	112	370	105	150	150	40	88	403	

MULTI-FIXTURE VISES

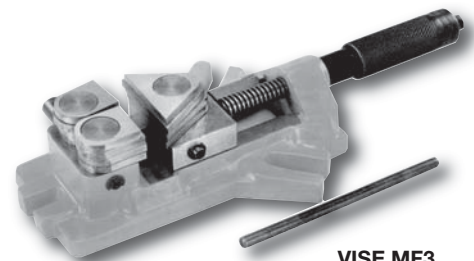
FEATURES

- Fast set-up for fixture work
- Locking jaws for precise repeatability
- Fast set-up for one-off work
- Holds odd shapes securely
- Fast set-up for regular work



VISE.MF6

Clamp at any of these levels and parallels lock in place



VISE.MF3

Jaw Capacity	Width of Jaws	Weight lbs	Overall Length Closed	Length	Width	Height	Code 302-	Part No.
3	2-3/4	17	14-3/4	10	7-1/8	3-1/4	283	VISE.MF3
6	5-1/2	75	25-1/8	18-3/4	9-1/16	5	286	VISE.MF6

TURNING/MILLING ACCESSORIES & WORK HOLDING